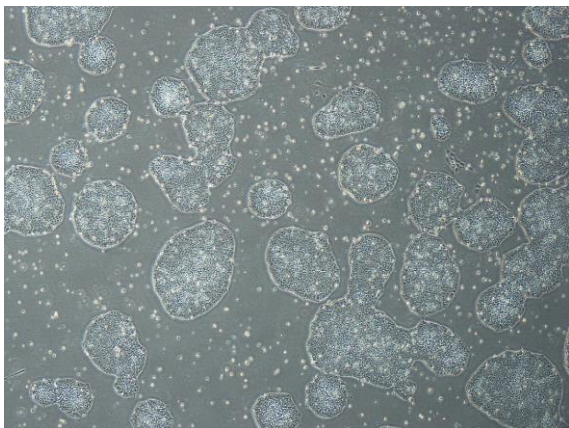
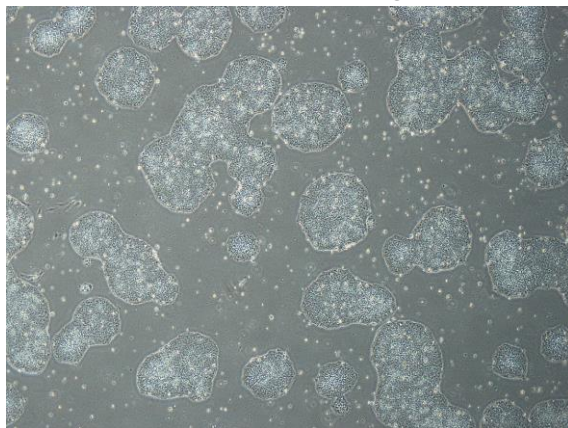


【 CiRA-j-1021 】 Morphology of iPSC colonies

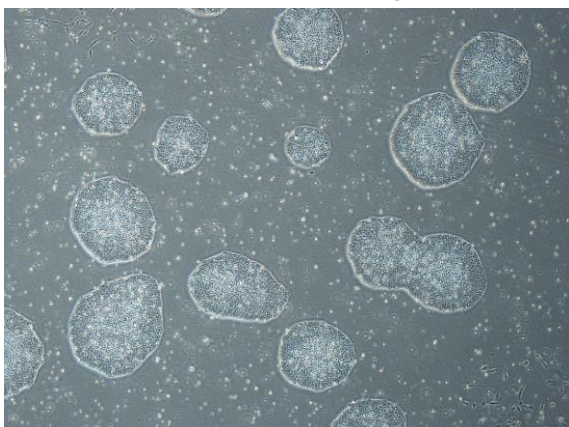
CiRA-j-1021-A: passage-3



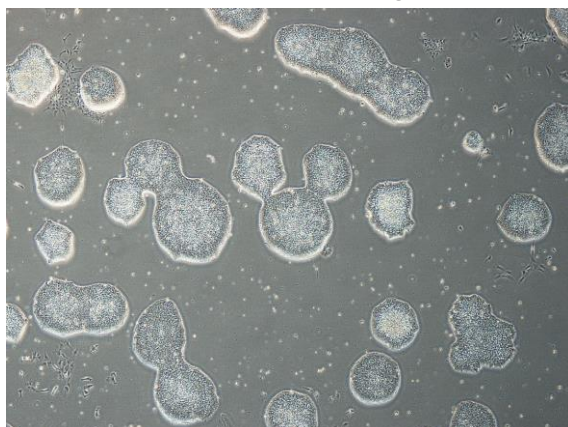
CiRA-j-1021-B: passage-3



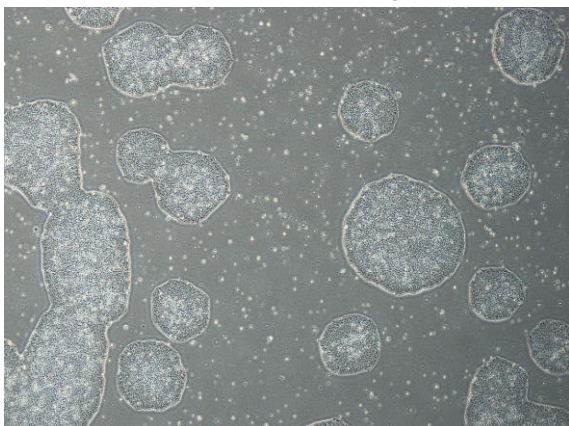
CiRA-j-1021-C: passage-3



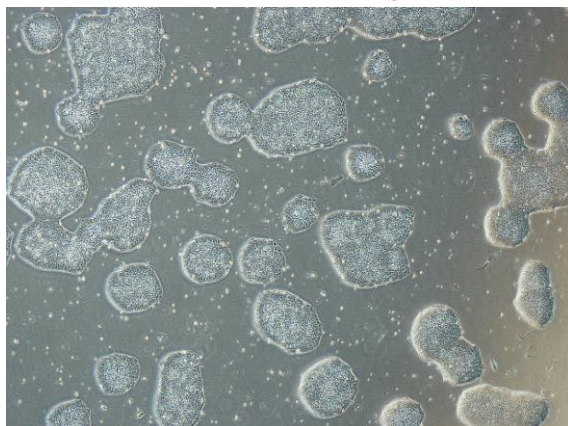
CiRA-j-1021-D: passage-3



CiRA-j-1021-E: passage-3



CiRA-j-1021-F: passage-3



(All images were captured at 4x magnification)